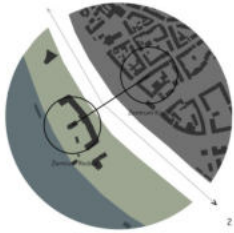
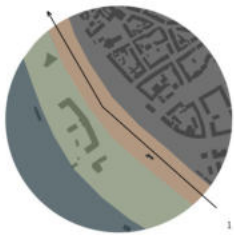


TERRAIN VAGUE
NEUES ZENTRUM
 KULTURBAHNHOF MAINZ-KASTEL



- Gebäude
- Wasser
- Mauer
- Hof
- Gasse
- Hauptverkehrsachse
- Grünanlagen

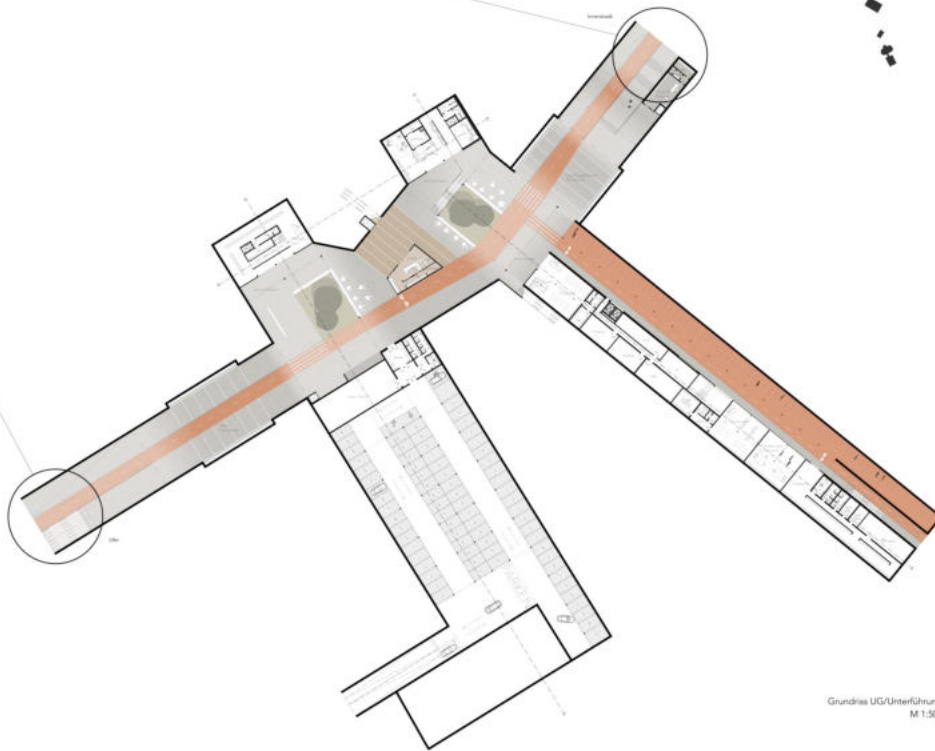




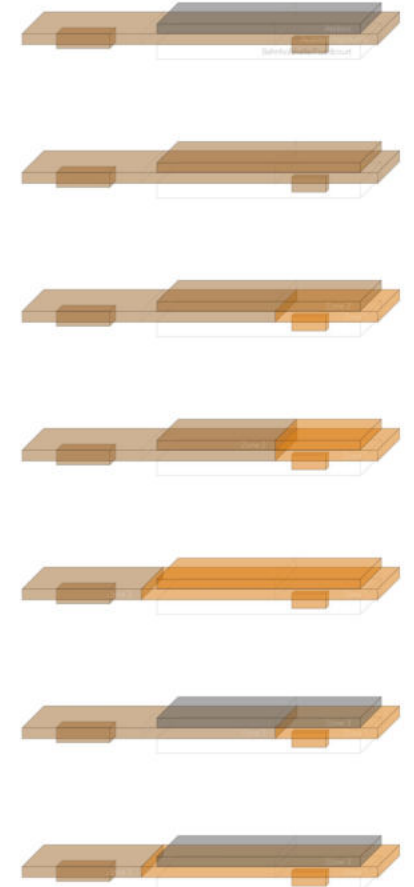
Bird-Eye



Schwarzplan
M 1:2500



Grundriss UG/Unterführung
M 1:500



Schema Gebäudeflexibilität





Rhein

Mainz-Kastel

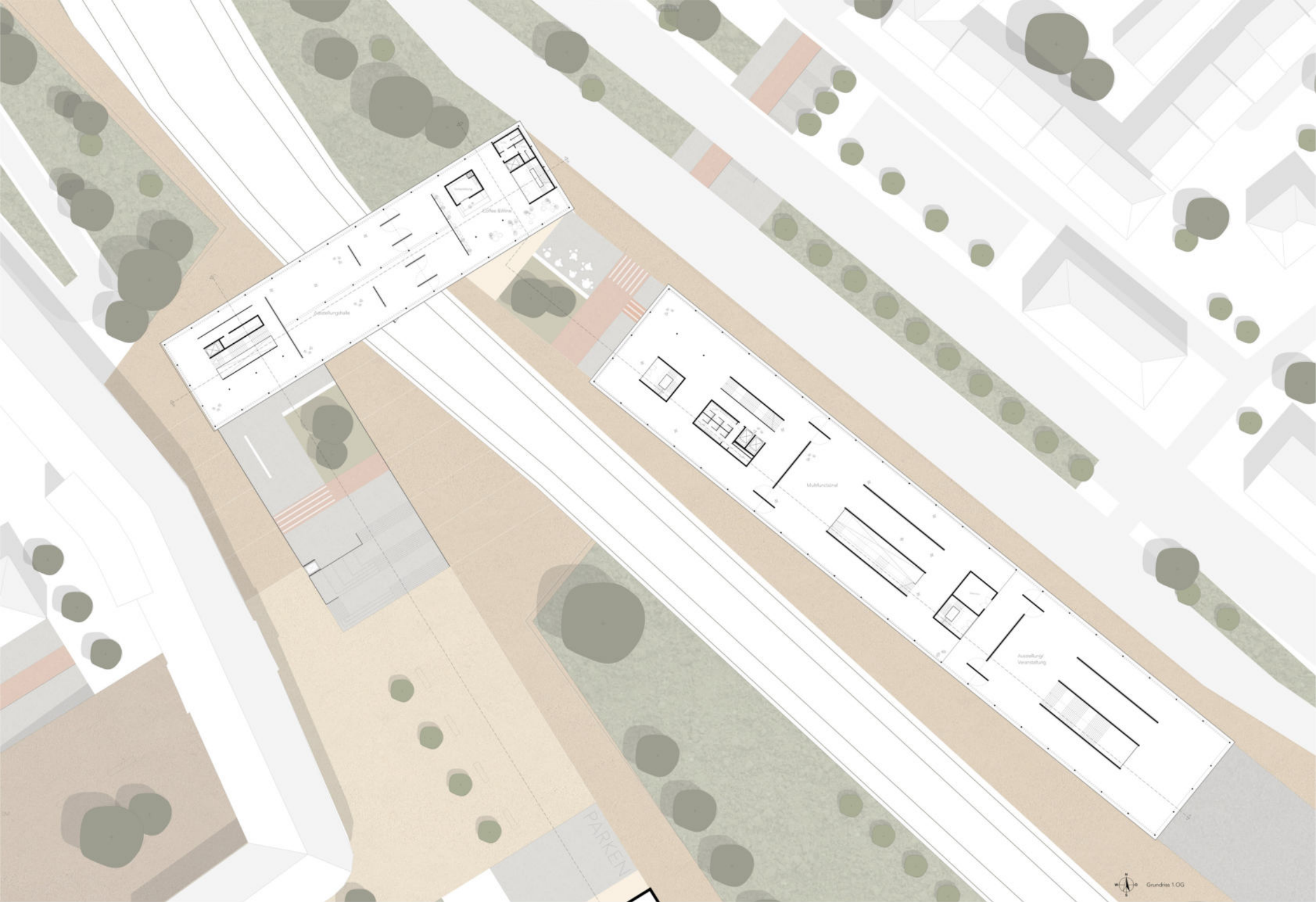
Hessen
Rheinland-Pfalz

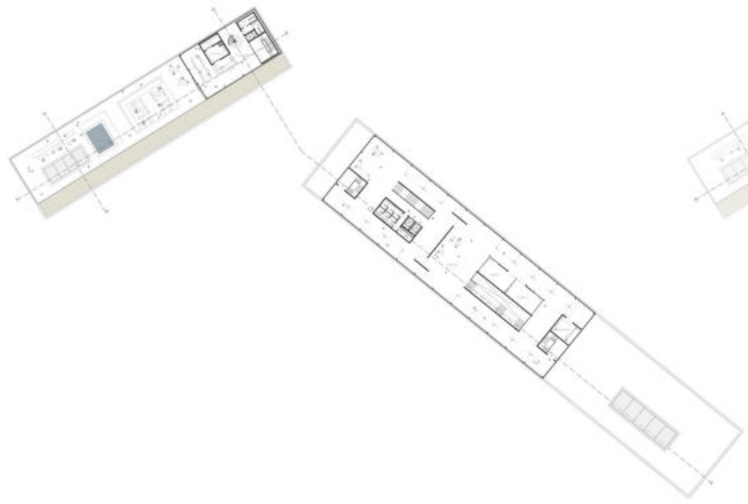
Mainz



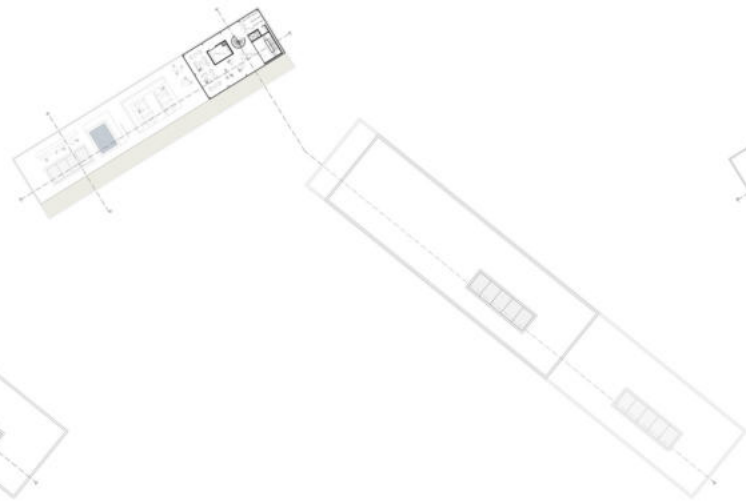
M 1:1000



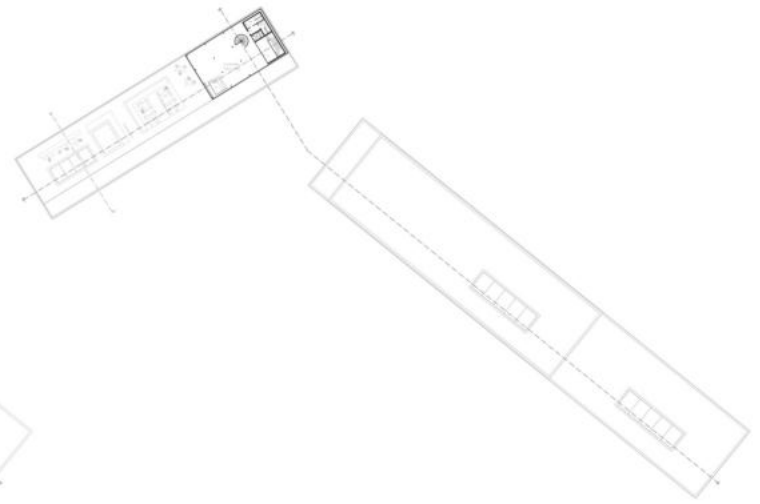




Grundriss 2.OG



Grundriss 3.OG

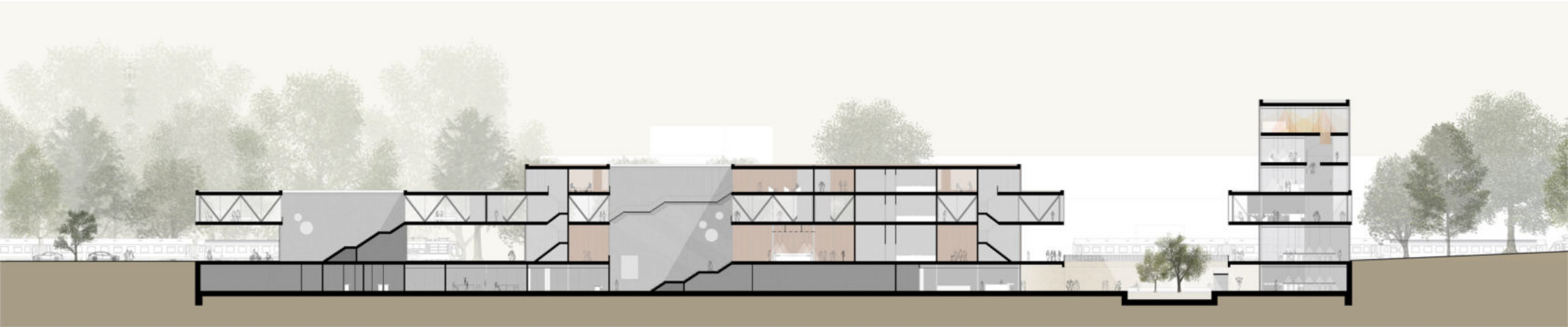


Grundriss 4.OG

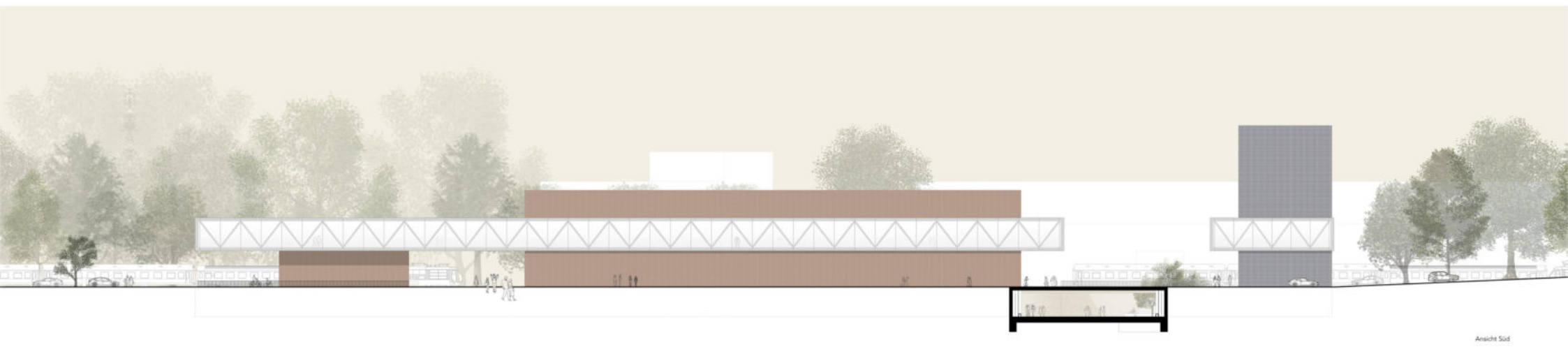


Ansicht Süd-Ost

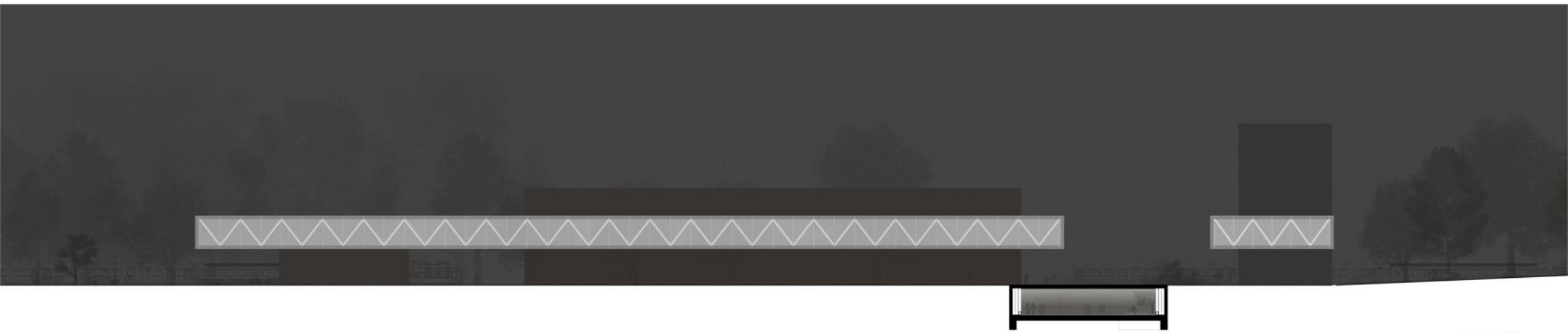




Schnitt AA



Ansicht Süd



Nachtsicht Süd



M 1:200

T10 - WS20/21 - Frankfurt UAS

1277971 ASENSA SATILMIS



Schritt B B



Schrittansicht Ost



Schritt C C

